


**Note.**  
Standard nut M4 = 8 pcs.  
Lock washer M4 = 8 pcs  
put it in a separate zip bag in the package

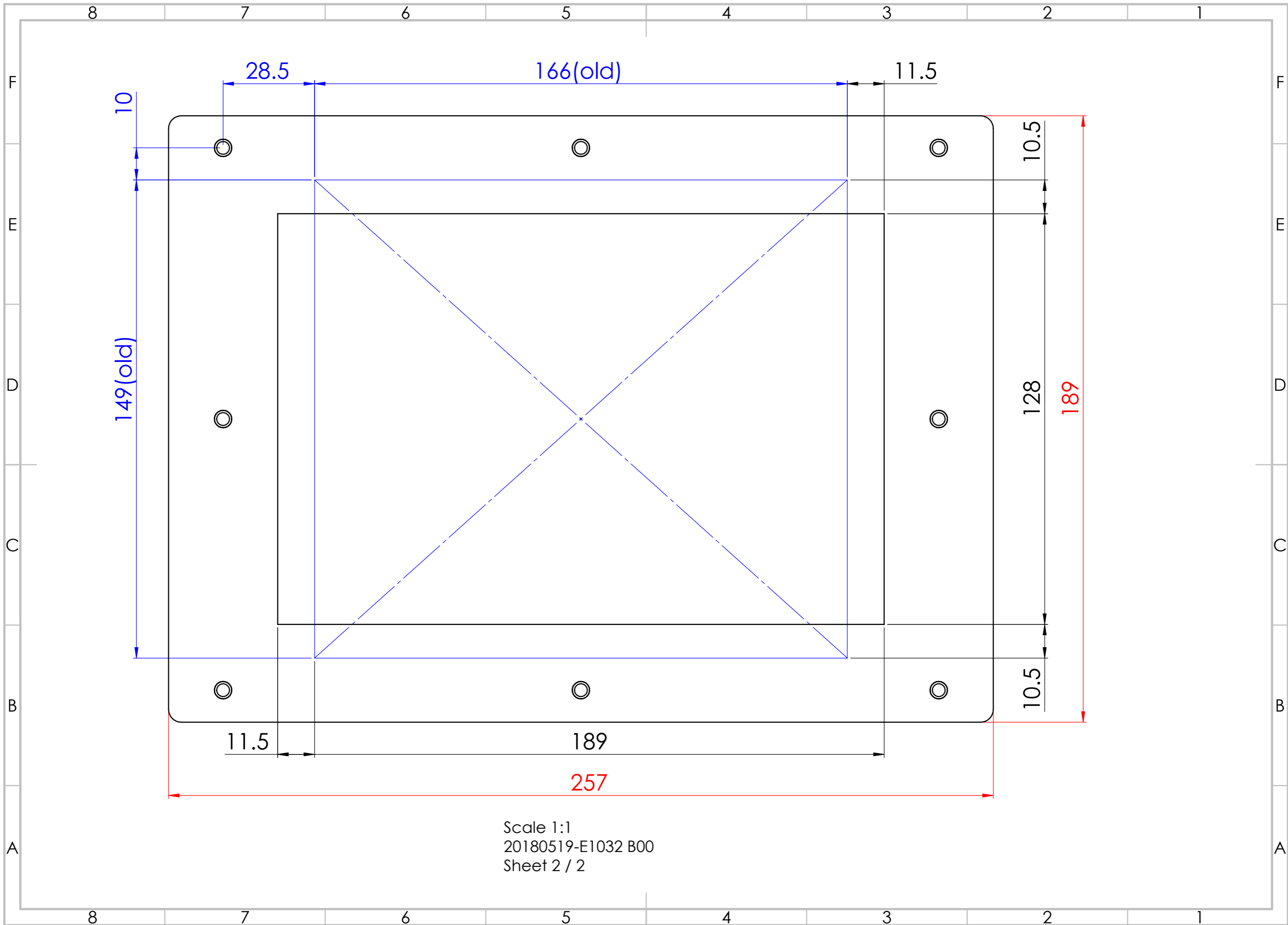


Scale 1:1  
Please see page 2 / 2

ITEM NO.	PART NUMBER	DESCRIPTION	QTY.
1	From-E1032	EG=2.0 mm.	1
2	Gasket-E1032	T=2.0 mm.	1
3	PEM FH-M4-12 X--N		8
4	170000030	Nut M4	8
5	1721480160	Lock Washer M4	8
6	2200000504	Powder paint interpon 610 silver fine texture	0.01

Sheet: 1 / 2  
All dimensions are in millimeter.

<small>GPV Asia (Thailand) Co., Ltd. 88 Moo 4, Bangpoo Industrial Estate Soi 11-12, Subprachin Road, Bangpoo District, Samut Prakan 10280, Thailand Tel: +66 (0) 2709 2550 Fax: +66 (0) 2709 2564</small>		THIS DRAWING REMAINS THE EXCLUSIVE PROPERTY OF THE GPV GROUP. IT SHALL NOT BE COPIED, REPRODUCED, DISCLOSED IN PART OR IN WHOLE, OR OTHERWISE MADE AVAILABLE TO THIRD PARTY WITHOUT OUR PREVIOUS WRITTEN CONSENT.	
MATERIAL: -		Surface: mm <sup>2</sup> Weight: g.	
SURFACE TREATMENT:		SCALE: 1:2	
CUSTOMER: Beijer		A3	
CUSTOMER/NO.:		DESCRIPTION: Adaptor plate from K30/E1032 to X2 pro7	
GPV ITEM NO.: 20180519-E1032		CHECKED/QC:	
DATE: 21/05/2018		SIGN: SPW	
<small>PROJECT NO.: N:\Mechanics\PROD\Customer\Beijer Electronics\Draw\GPV\20180519-XXXX\20180519-E1032</small>			



Scale 1:1  
 20180519-E1032 B00  
 Sheet 2 / 2